

# SUPPORT NATIVE BEES

Moist Soil



Culver's Root  
*Veronicastrum virginicum*



Swamp Milkweed  
*Asclepias incarnata*



Obedient Plant  
*Physostegia virginiana*



Ironweed  
*Vernonia fasciculata*



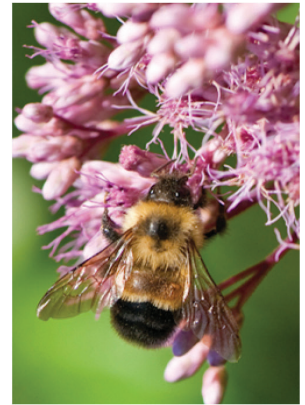
White Turtlehead  
*Chelone glabra*



Blue Lobelia  
*Lobelia siphilitica*



Fringed Loosestrife  
*Lysimachia ciliata*



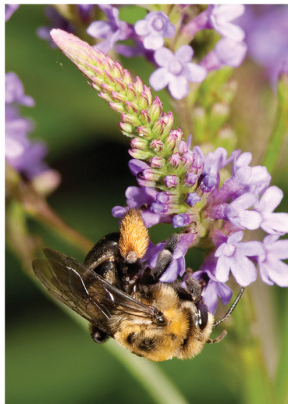
Joe Pye Weed  
*Eutrochium maculatum*



New England Aster  
*Symphotrichum novae-angliae*



Common Boneset  
*Eupatorium perfoliatum*



Blue Vervain  
*Verbena hastata*



Mountain Mint  
*Pycnanthemum virginicum*