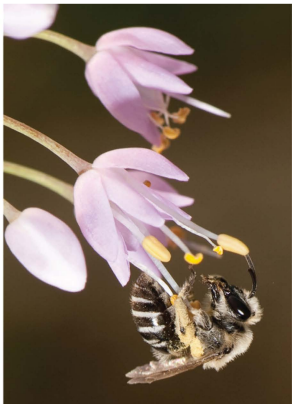
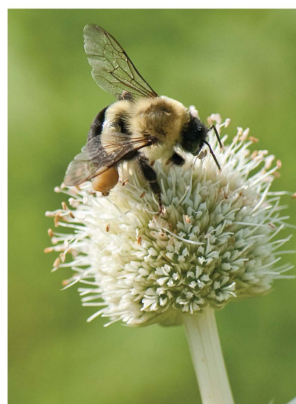


SUPPORT NATIVE BEES

Clay Soil



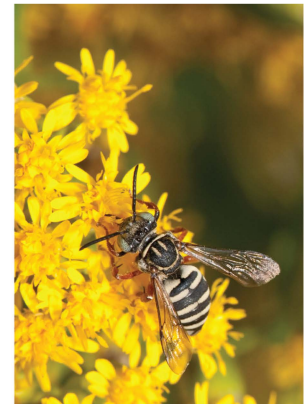
Nodding Onion
Allium cernuum



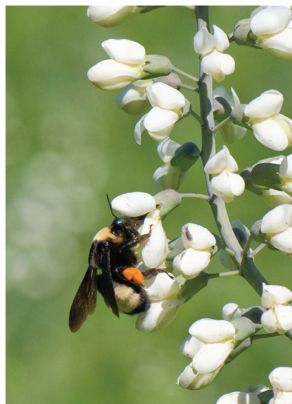
Rattlesnake Master
Eryngium yuccifolium



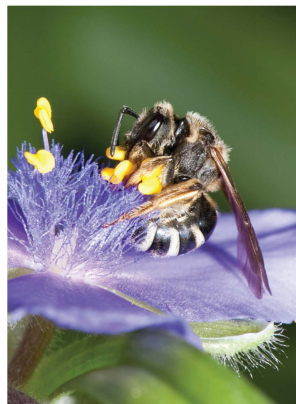
Wild Quinine
Parthenium integrifolium



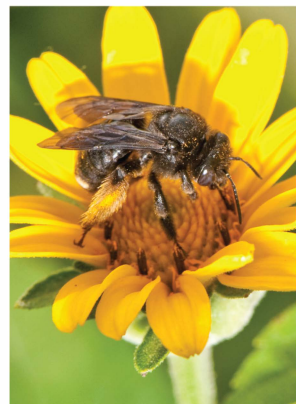
Stiff Goldenrod
Solidago rigida



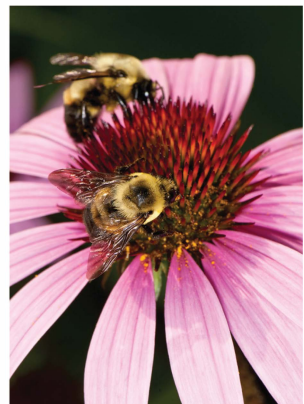
Wild White Indigo
Baptisia lactea



Prairie Spiderwort
Tradescantia occidentalis



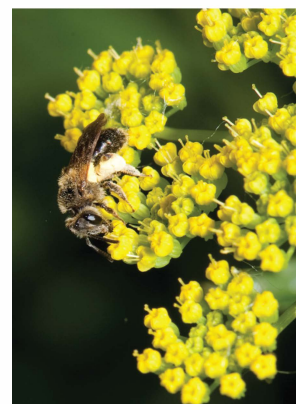
False Sunflower
Heliopsis helianthoides



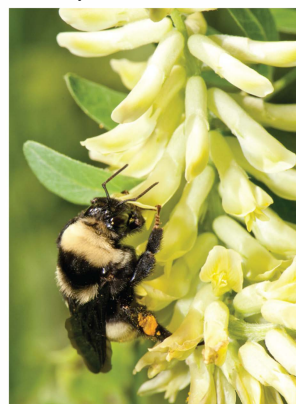
Purple Coneflower
Echinacea purpurea



New England Aster
Symphyotrichum novae-angliae



Golden Alexanders
Zizia aurea



Canada Milk Vetch
Astragalus canadensis



Prairie Blazingstar
Liatris pycnostachya