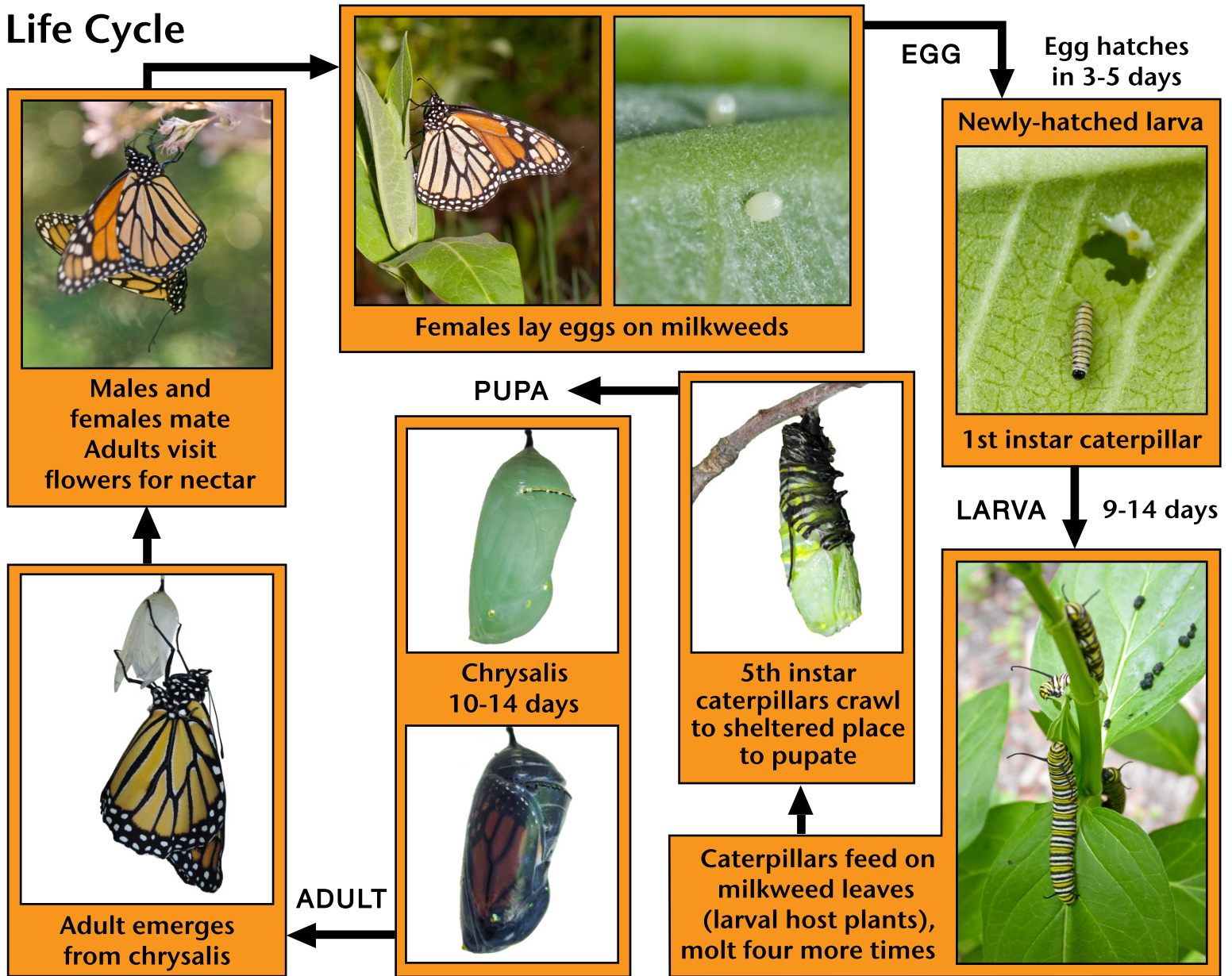


MONARCH BUTTERFLY ~ *Danaus plexippus*

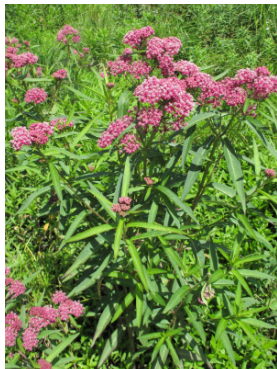
Life Cycle



Larval Host Plants - Upper Midwest and Great Lakes Region



Butterfly Milkweed
Asclepias tuberosa



Swamp Milkweed
Asclepias incarnata



Poke Milkweed
Asclepias exaltata



Common Milkweed
Asclepias syriaca

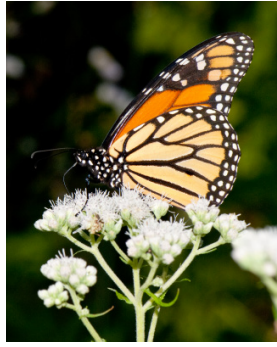


Whorled Milkweed
Asclepias verticillata

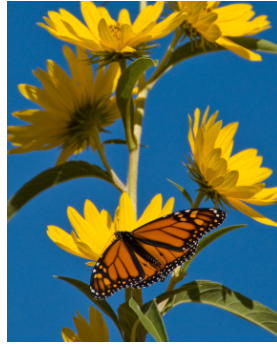
Adult Nectar Plants



Common Ironweed
Vernonia fasciculata



Common Boneset
Eupatorium perfoliatum



Maximilian Sunflower
Helianthus maximiliani



Blue Vervain
Verbena hastata



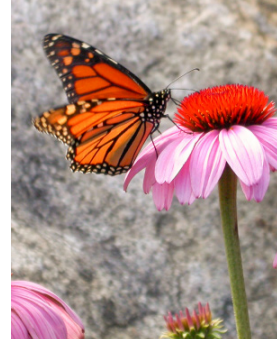
Spotted Joe Pye Weed
Eupatorium maculatum



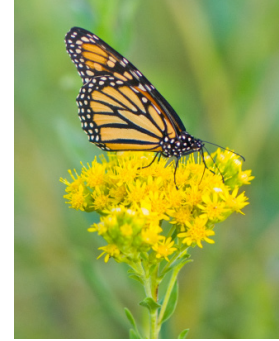
Ozark Bluestar
Amsonia tabernaemontana



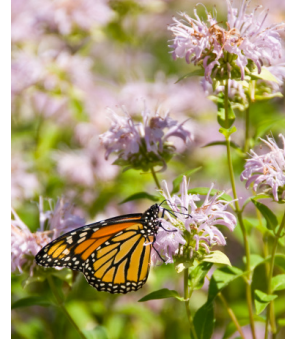
Meadow Blazingstar
Liatris ligulistylis



Purple Coneflower
Echinacea purpurea



Stiff Goldenrod
Solidago rigida



Wild Bergamot
Monarda fistulosa

MONARCH NECTAR AND HOST PLANT CULTURAL GUIDE

							BLOOM					
							MAY	JUN	JUL	AUG	SEP	OCT
	BOTANICAL NAME	COMMON NAME	COLOR	HEIGHT	EXPOSURE	SOIL						
SUN, MEDIUM-DRY SITES	<i>Agastache foeniculum</i>	Anise Hyssop	blue	2-4 ft	full sun	loam			x	x		
	<i>Amsonia tabernaemontana</i>	Ozark Bluestar	blue	2-5 ft	full sun	sand-loam to clay	x	x				
	<i>Aster laevis</i>	Smooth Blue Aster	violet	3-4 ft	full - part sun	sand, loam				x	x	x
	<i>Echinacea pallida</i>	Pale Purple Coneflower	pink	2-4 ft	full sun	sand-loam to clay		x	x			
	<i>Echinacea purpurea</i>	Purple Coneflower	pink	2-4 ft	full - part sun	loam - clay			x	x		
	<i>Eupatorium purpureum</i>	Sweet Joe Pye Weed	light pink	3-7 ft	full - part sun	sand-loam to clay				x	x	
	<i>Helianthus maximiliani</i>	Maximilian Sunflower	yellow	3-7 ft	full sun	sand-loam to clay		x	x	x		
	<i>Liatris aspera</i>	Rough Blazingstar	pink	2-4 ft	full sun	sand - loam				x	x	
	<i>Phlox pilosa</i>	Prairie Phlox	pink	1 ft	full sun	sand - loam	x	x	x			
	<i>Solidago rigida</i>	Stiff Goldenrod	yellow	3-4 ft	full sun	sand-loam to clay				x	x	x
	<i>Solidago speciosa</i>	Showy Goldenrod	yellow	3-5 ft	full sun	sand-loam to clay				x	x	x
	<i>Verbena stricta</i>	Hoary Vervain	purple	1-2 ft	full sun	sand - loam			x	x	x	
SUN, MEDIUM-WET SITES	<i>Aster novae-angliae</i>	New England Aster	purple	3-5 ft	full sun	loam - clay				x	x	x
	<i>Eupatorium maculatum</i>	Spotted Joe Pye Weed	pink	3-7 ft	full sun	loam - clay				x	x	
	<i>Eupatorium perfoliatum</i>	Common Boneset	white	3-7 ft	full sun	loam - clay				x	x	
	<i>Liatris ligulistylis</i>	Meadow Blazingstar	purple	2-4 ft	full sun	loam - clay				x	x	
	<i>Liatris pycnostachya</i>	Prairie Blazingstar	purple	2-5 ft	full sun	loam - clay			x	x		
	<i>Monarda fistulosa</i>	Wild Bergamot	lavender	2-4 ft	full sun	loam - clay			x	x	x	
	<i>Verbena hastata</i>	Blue Vervain	blue	2-5 ft	full sun	loam - clay			x	x	x	
	<i>Vernonia fasciculata</i>	Common Ironweed	purple	3-6 ft	full sun	sand-loam - clay			x	x	x	
HOST PLANTS	<i>Asclepias incarnata</i>	Swamp Milkweed	pink	3-4 ft	full sun	moist, loam - clay			x	x		
	<i>Asclepias exaltata</i>	Poke Milkweed	white	3-4 ft	part sun - shade	dry-med, loam		x	x			
	<i>Asclepias syriaca</i>	Common Milkweed	pink	2-3 ft	full - part sun	dry-med, all soils		x	x	x		
	<i>Asclepias tuberosa</i>	Butterfly Milkweed	orange	1-2 ft	full sun	dry-med, sand, loam			x	x	x	
	<i>Asclepias verticillata</i>	Whorled Milkweed	white	1 ft	full - part sun	dry-med, sand, loam				x	x	x